



Modular Advanced Dimmer

Device description

PX914 is a professional modular dimmer with rack mounting. Up to 24 modules divided into 4 groups (up to 6 modules in each group) can be installed in the cabinet. Each group can have 4 x 3000W or 2 x 5000W modules (one type within the group).

The device is powered from three phases. The dimmer allows to control from 5 different sources simultaneously:

- 2 x DMX-512,
- 3 x Art-Net / sACN.

The Modular Advanced Dimmer is equipped with a touch color display, 4 – 8 buttons and a knob. Using the buttons and the knob, you can easily navigate through the intuitively prepared menu, where you can set all the parameters of the dimmer and view its status.

PX914 has a built-in signal merging system with the possibility of selecting one of 13 priorities, including switching on any circuit permanently, regardless of the control. Advanced electronics allow for individual addressing of each output channel and graphic editing of the control characteristics (5 default characteristics and 5 user-set characteristics). The modules have switches (On / Off) at each of the outputs that allow to manually switch the output to 100% (the so-called Bypass) – the supply current flows directly to the output, bypassing the regulator circuit.

The dimmer also allows to set the limits of output voltages and currents for each channel separately. It is also equipped with a bulb heating system (10 levels) and control of the attached fuse and broken circuit / blown bulb. Reaction to DMX signal loss can be defined by the user. In addition to the basic options (*ON*, *OFF*, *HOLD*, *SLOW TURN OFF*), there are 64 scenes and a program to define.

Built-in "soft-start", "soft-on" and "even-off" circuits ensure reliable operation in harsh conditions. Direct grid zero detection and optical isolation of the DMX input guarantee high noise immunity.

PX914 is a durable free-standing rack cabinet, and each module has a metal housing with an efficient cooling system.

NOTE! The device should be installed in a technical room.

„Art-Net™ Designed by and Copyright Artistic Licence Holdings Ltd”

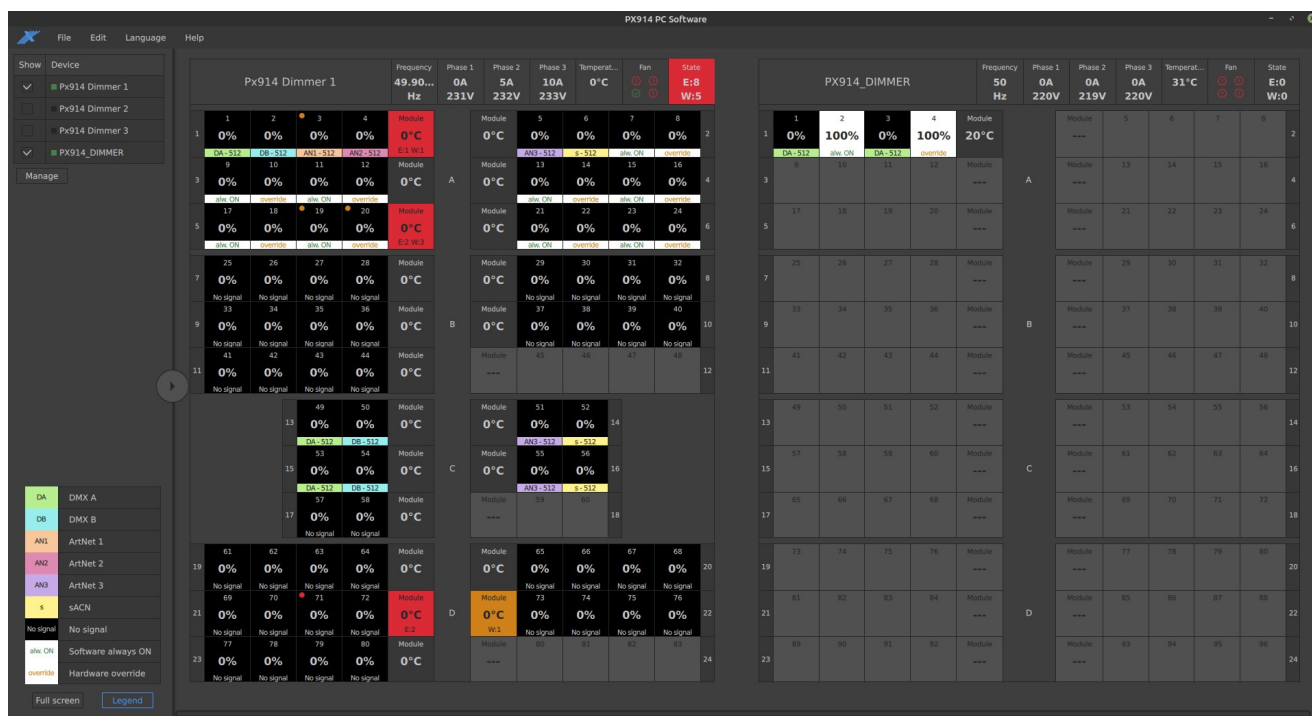


Module models available:

- 4 x 3000W
- 2 x 5000W



The device comes with PC software available for download from the manufacturer's website (<https://pxm.pl/>), which allows to remotely edit the dimmer settings. The application also allows to view the operating parameters of the device, individual channels and change the configuration.



Configurations available

Control module

No. catalog	Name	Description	Contains
PX914-C	MAD Control Unit	control module	control module

- C – control module

Type of cabinet

No. catalog	Name	Description	Contains
PX914-24	MAD Rack 24	cabinet	<ul style="list-style-type: none">• fans• power connections• PE and N bus• control module housing
PX914-48	MAD Rack 48		
PX914-72	MAD Rack 72		
PX914-96	MAD Rack 96		

- **24 / 48 / 72 / 96** – maximum number of output channels (using 4 x 3kW modules)

Module housings

No. catalog	Name	Description	Contains
PX914-F-3	MAD Frame 24 x 3kW	module housing 3kW 1FI/1CH	<ul style="list-style-type: none">• housing for 6 modules• fuse protection block• output ZUG connectors
PX914-F-5	MAD Frame 12 x 5kW	module housing 5kW 1FI/1CH	
PX914-F-3-R	MAD Frame 24 x 3kW R	module housing 3kW 1FI/4CH	<ul style="list-style-type: none">• housing for 6 modules• fuse and residual current protection block• output ZUG connectors
PX914-F-5-R	MAD Frame 12 x 5kW R	module housing 5kW 1FI/2CH	

- **F** – housing
- **3 / 5** – adapted to 3kW or 5kW modules
- **R** – residual current protection for each module in the housing
 - version 4 x 3000W one residual current device for 4 circuits
 - version 2 x 5000W one residual current device for 2 circuits

Modules

No. catalog	Name	Description	Contains
PX914-D-3-R	MAD Dim Module 4 x 3kW R	dimmer module 4 x 3kW 1FI/1CH	dimmer and relays
PX914-D-3	MAD Dim Module 4 x 3kW	dimmer module 4 x 3kW 1FI/4CH	
PX914-D-5-R	MAD Dim Module 2 x 5kW R	dimmer module 2 x 5kW 1FI/1CH	
PX914-D-5	MAD Dim Module 2 x 5kW	dimmer module 2 x 5kW 1FI/2CH	

- **D** – dimmer – it also contains relays that enable switching each circuit individually into the mode of direct power supply to the outputs, bypassing the regulator system (Bypass)
- **3 / 5** – 4 x 3kW or 2 x 5kW module
- **R** – each circuit is protected by an individual residual current device

Technical data

type	PX914
DMX lines	2
Art-Net Universe	3
optically insulated DMX line	yes
overvoltage protection of DMX line	yes
circuit break detection	yes
faulty circuit control	yes
Residual current protection	yes (depending on the configuration – the Modules table)
resolution of control	8 or 16 bit
touch screen resolution	480 x 272px (4,3")
preheat	yes
output merge	yes (13 priority)
output power limiter	yes
attenuation	according to the declaration of conformity (400µs)
output carrying capacity	3000W or 5000W
output protection	full electronic protection + automatic fuses
fans	electronic control
cabinet color	RAL9005
input connectors	copper busbars with M10 screw holes
output sockets	4mm ² terminals
power supply	3-NPE AC 400/230V / 50Hz
current consumption	3 x 416A (at full load in 96 x 3000W version)
weight	MAD Rack 96 cabinet (whole): 400kg MAD Rack 72 cabinet (whole): 305kg MAD Rack 48 cabinet (whole): 210kg MAD Rack 24 cabinet (whole): 115kg 4 x 3000W module: 6.7kg
dimensions (Rack cabinet)	width: 600mm height MAD Rack 96 / 72 / 48 / 24: 2150 / 1750 / 1350 / 950mm + leveling feet 40 – 70mm depth: 800mm